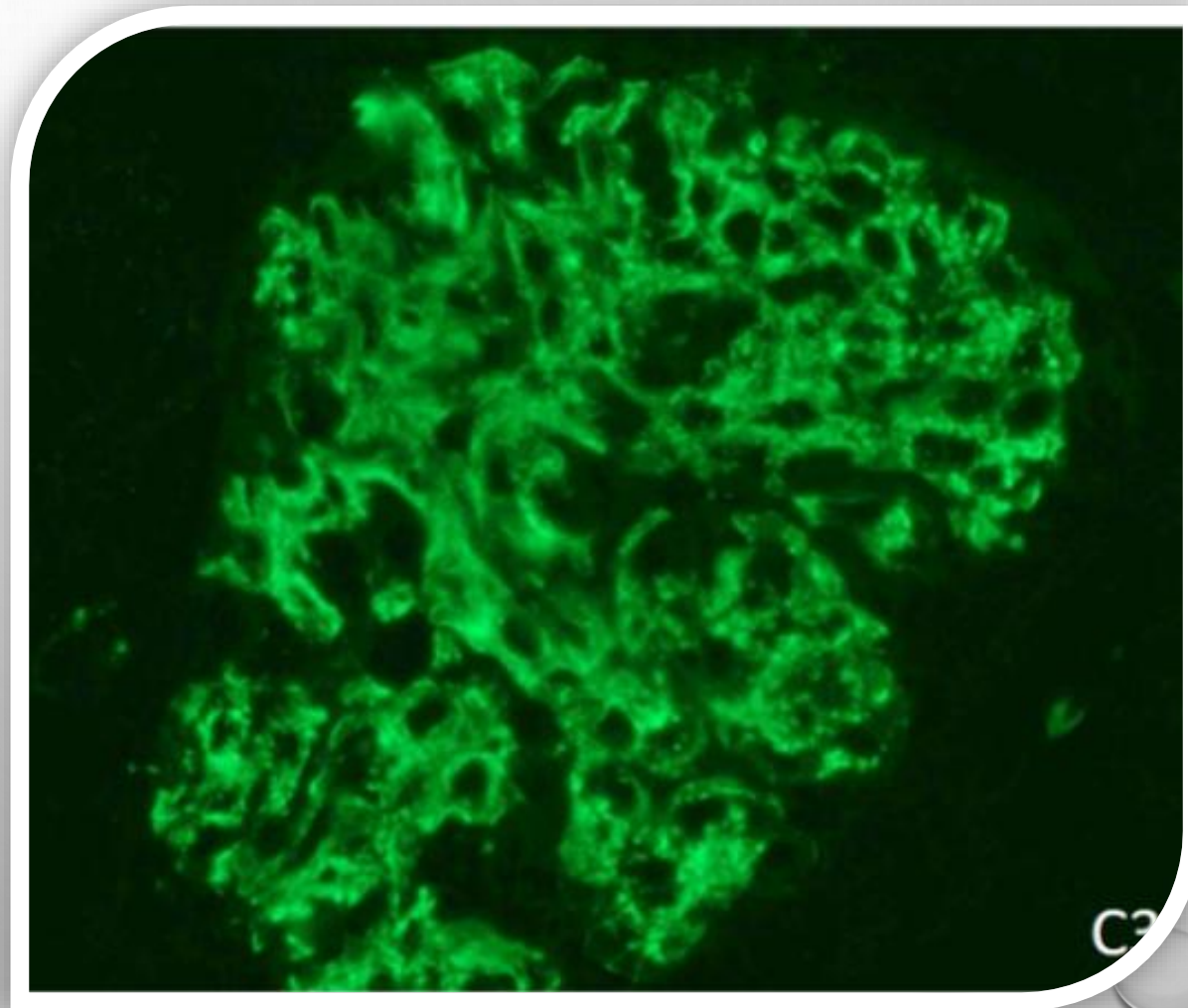


Κλινικά χαρακτηριστικά και έκβαση ασθενών με C3 σπειραματοπάθεια



Αντωνία Ν. Παπαδάκη
Διευθύντρια ΜΤΝ/
Νεφρολογική Κλινική
Γ.Ν.Ν. Χανίων

frontiers | Frontiers in Nephrology

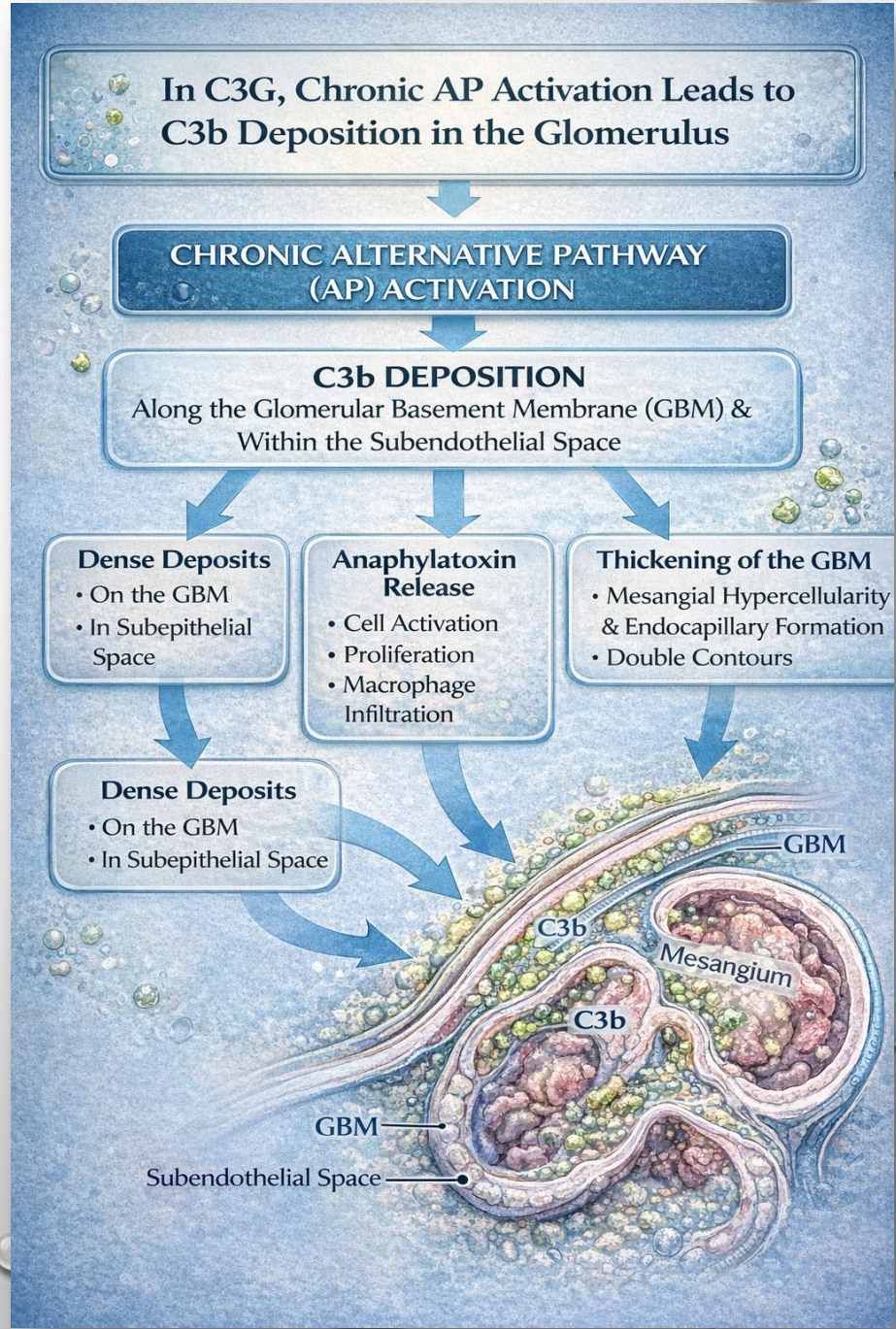
Front Nephrol. 2024 Oct 29;4:1460146. doi: [10.3389/fneph.2024.1460146](https://doi.org/10.3389/fneph.2024.1460146)

C3 glomerulopathy: a kidney disease mediated by alternative pathway deregulation

[Karin Heidenreich](#)¹, [Deepti Goel](#)², [P S Priyamvada](#)³, [Sagar Kulkarni](#)⁴, [Vipul Chakurkar](#)⁴, [Dinesh Khullar](#)⁵, [Ravi Singh](#)⁶, [Charan Bale](#)⁷, [Peter F Zipfel](#)⁸

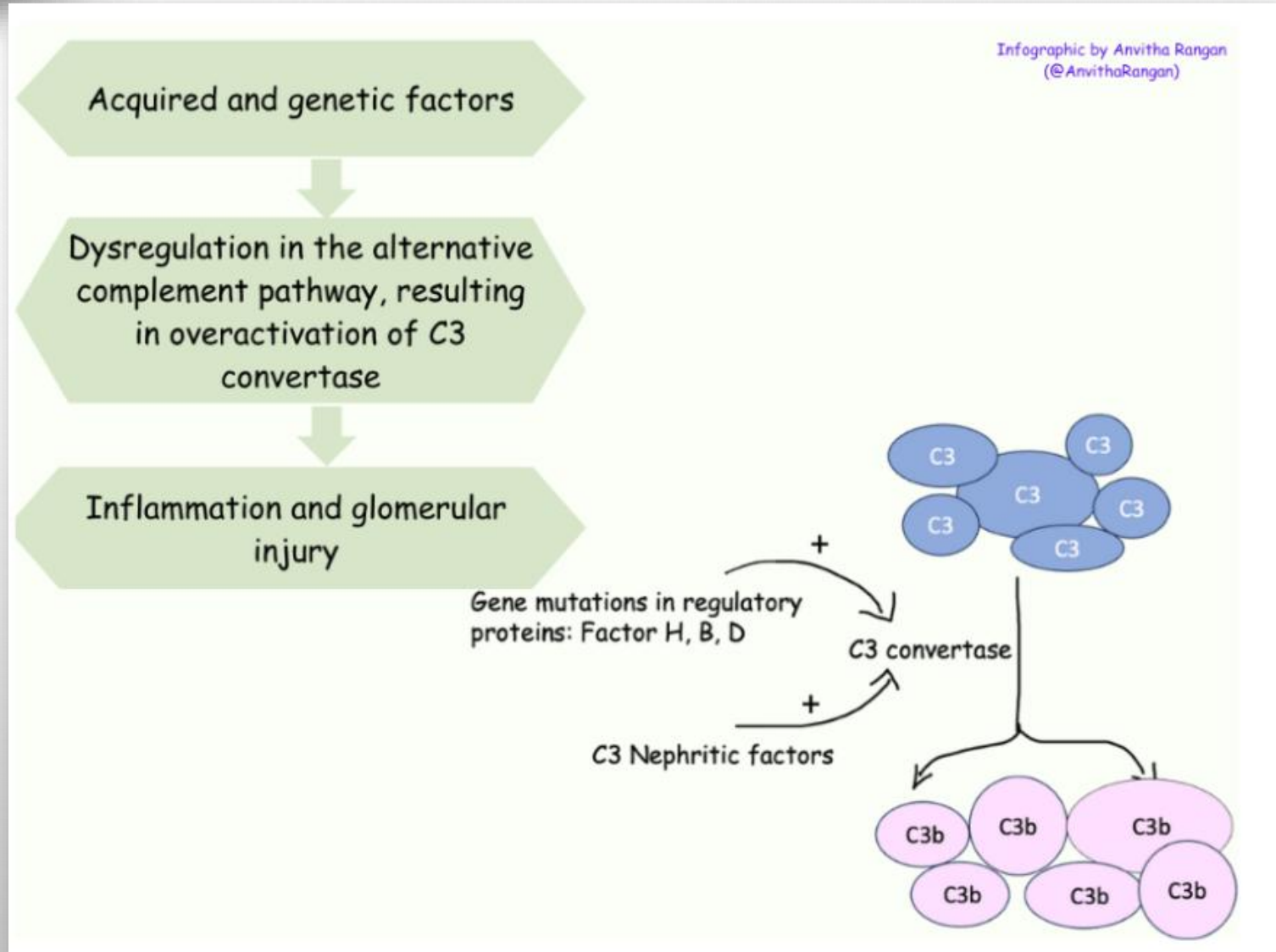
See Journal →

0,3-2 ασθενείς/ 1.000.000





Διαταραχή της ενεργοποίησης της εναλλακτικής οδού του συμπληρώματος στο πλάσμα

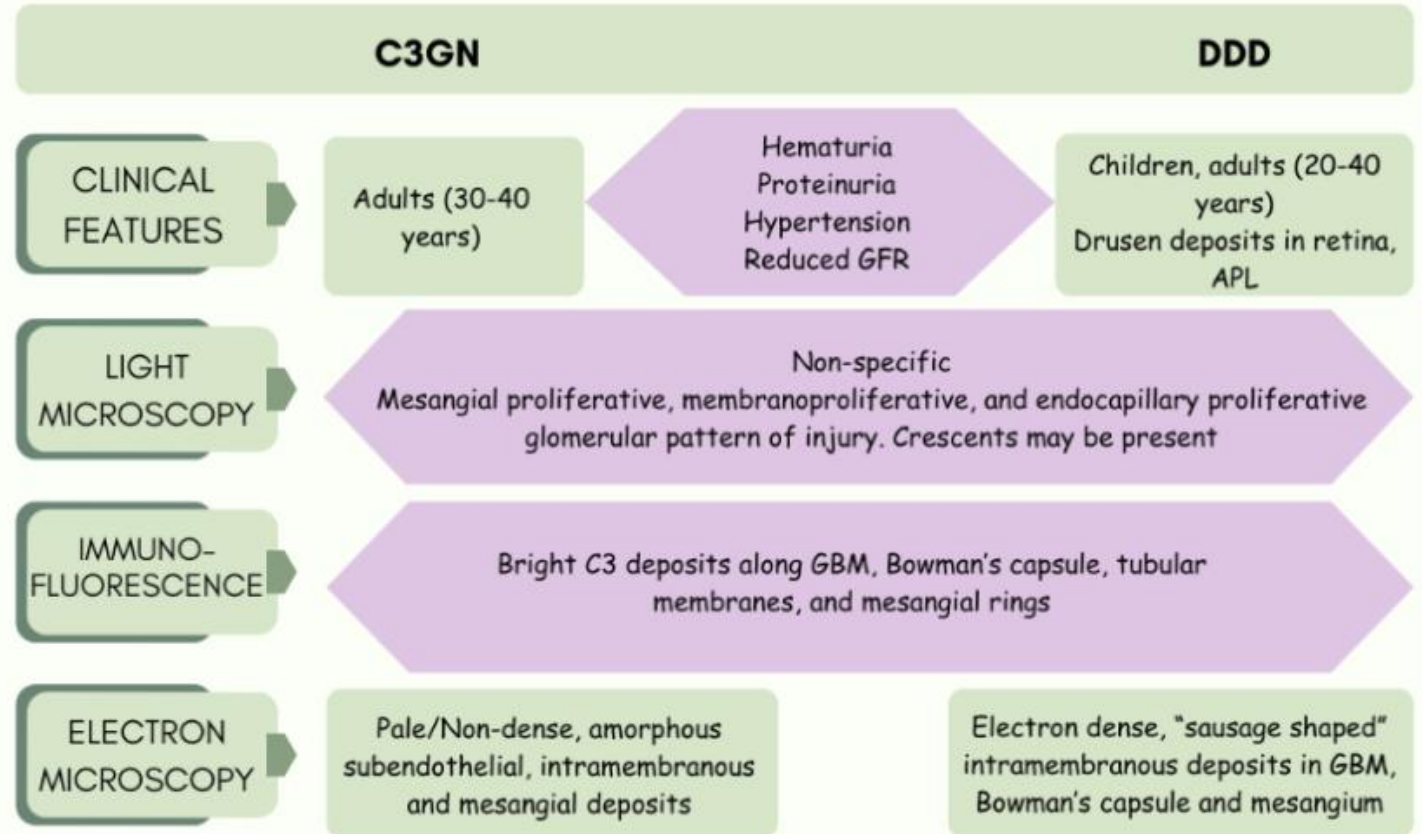




MGRS

Infographic by Anvitha Rangan (@AnvithaRangan)

C3 GLOMERULOPATHY



Πτωχή νεφρική πρόγνωση

APL: Acquired partial lipodystrophy, GBM: Glomerular basement membrane

Review
International Journal of
Molecular Sciences

A Narrative Review on C3 Glomerulopathy: A Rare Renal Disease

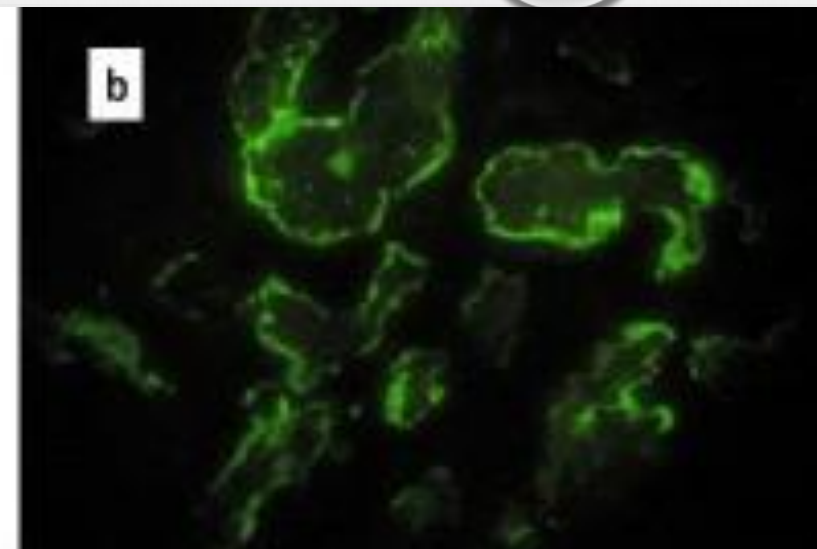
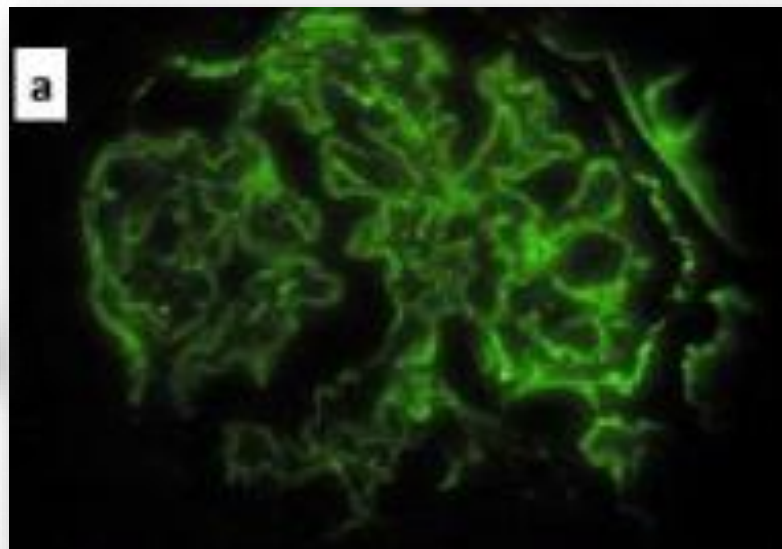
Francesco Paolo Schena 1,2,*^{ORCID}, Pasquale Esposito 3^{ORCID} and Michele Rossini 1

1 Department of Emergency and Organ Transplantation, Renal Unit, University of Bari, 70124 Bari, Italy; michelrossini@libero.it

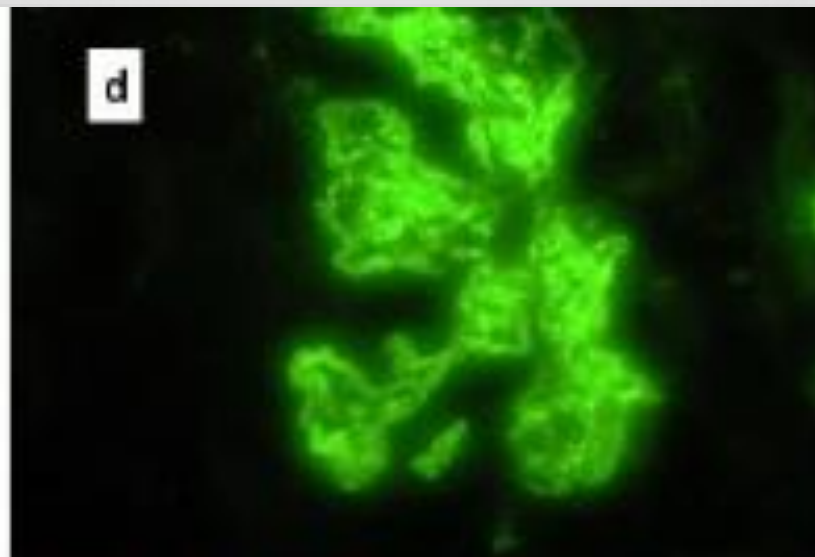
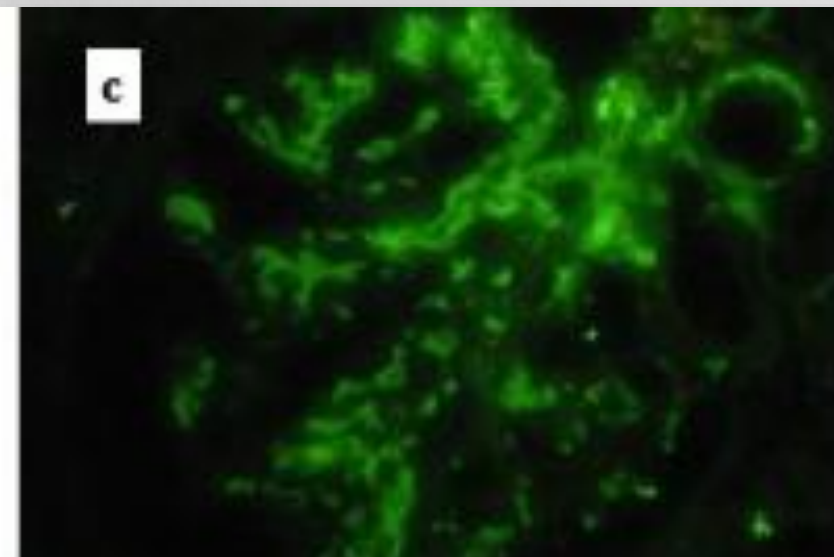
2 Schena Foundation, European Center for the Study of Renal Diseases, 70010 Valenzano, Italy

3 Department of Internal Medicine, Division of Nephrology, Dialysis and Transplantation, University of Genoa and IRCCS Ospedale Policlinico San Martino, 16132 Genova, Italy; p.esposito@smatteo.pv.it

MDPI



DDD πρότυπο κορδέλλας



C3 GN κοκκιώδες πρότυπο



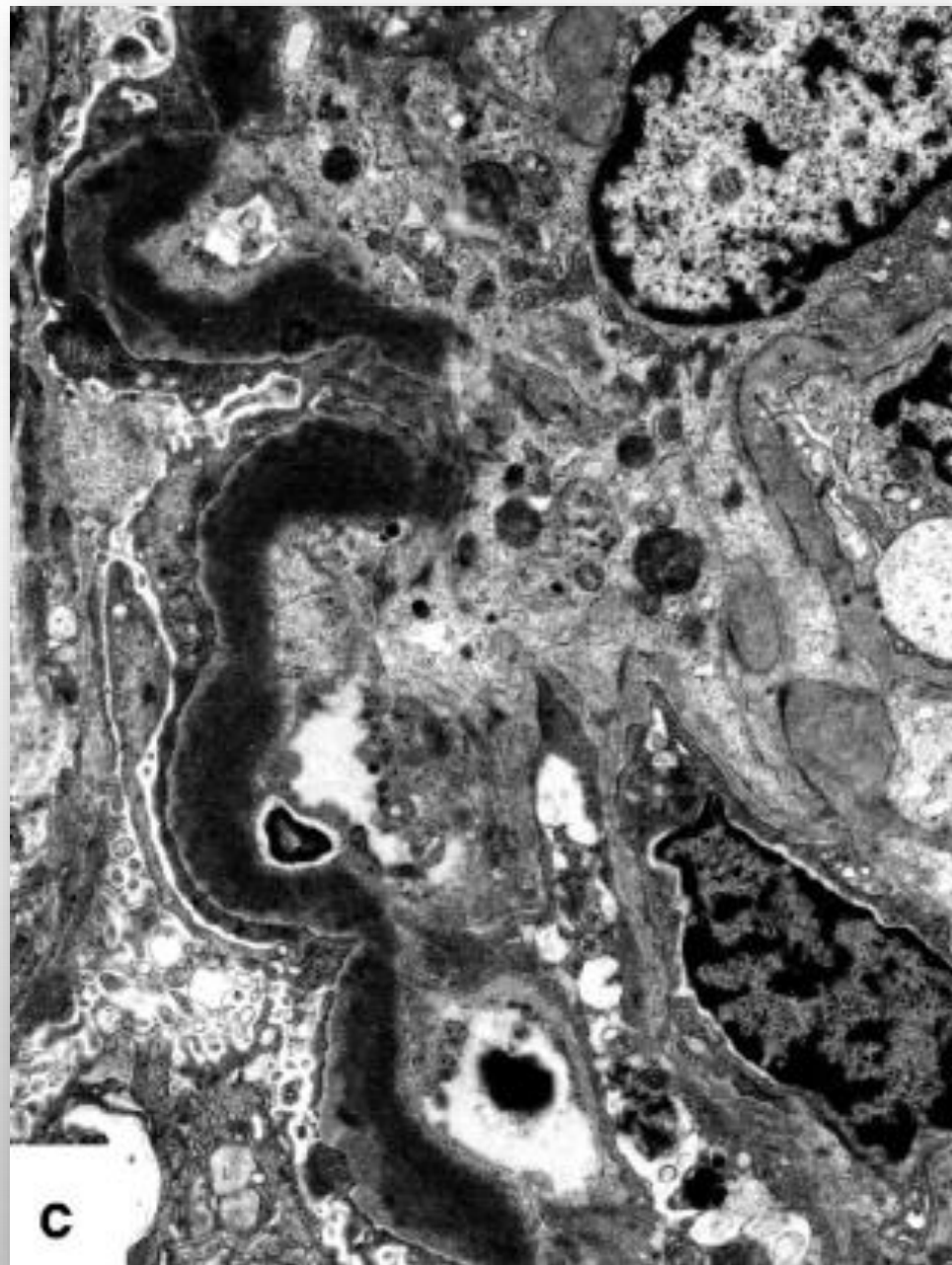
International Journal of
Molecular Sciences



Review
**A Narrative Review on C3 Glomerulopathy: A Rare
Renal Disease**

Francesco Paolo Schena ^{1,2,*}, Pasquale Esposito ³ and Michele Rossini ¹

- ¹ Department of Emergency and Organ Transplantation, Renal Unit, University of Bari, 70124 Bari, Italy; michelrossini@libero.it
- ² Schena Foundation, European Center for the Study of Renal Diseases, 70010 Valenzano, Italy
- ³ Department of Internal Medicine, Division of Nephrology, Dialysis and Transplantation, University of Genoa and IRCCS Ospedale Policlinico San Martino, 16132 Genova, Italy; pesposito@smatteo.pv.it



Κλινικά χαρακτηριστικά ασθενών με C3 σπειραματοπάθεια

Study Population

31 Patients

Male: 51.6%

Female: 48.4%

Mean age: 40 years

Follow-up: 60 months

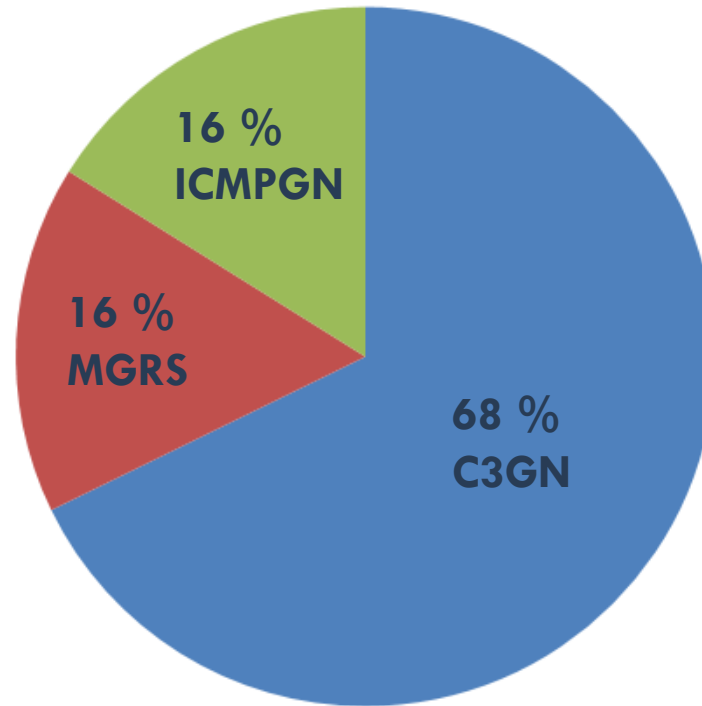
Αναδρομική μελέτη κοορτής

1997-2025

Κλινικά χαρακτηριστικά
Προγνωστικοί παράγοντες

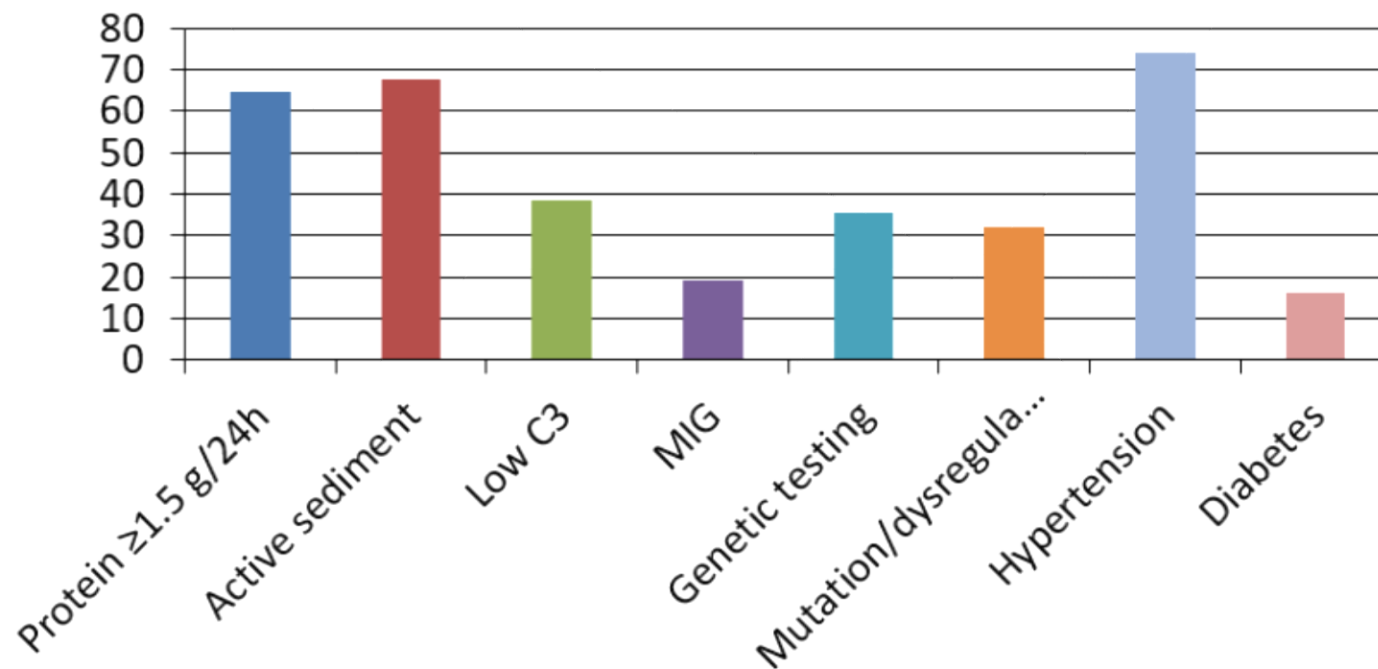
Disease Type Distribution (n=31)

Percentage (%)



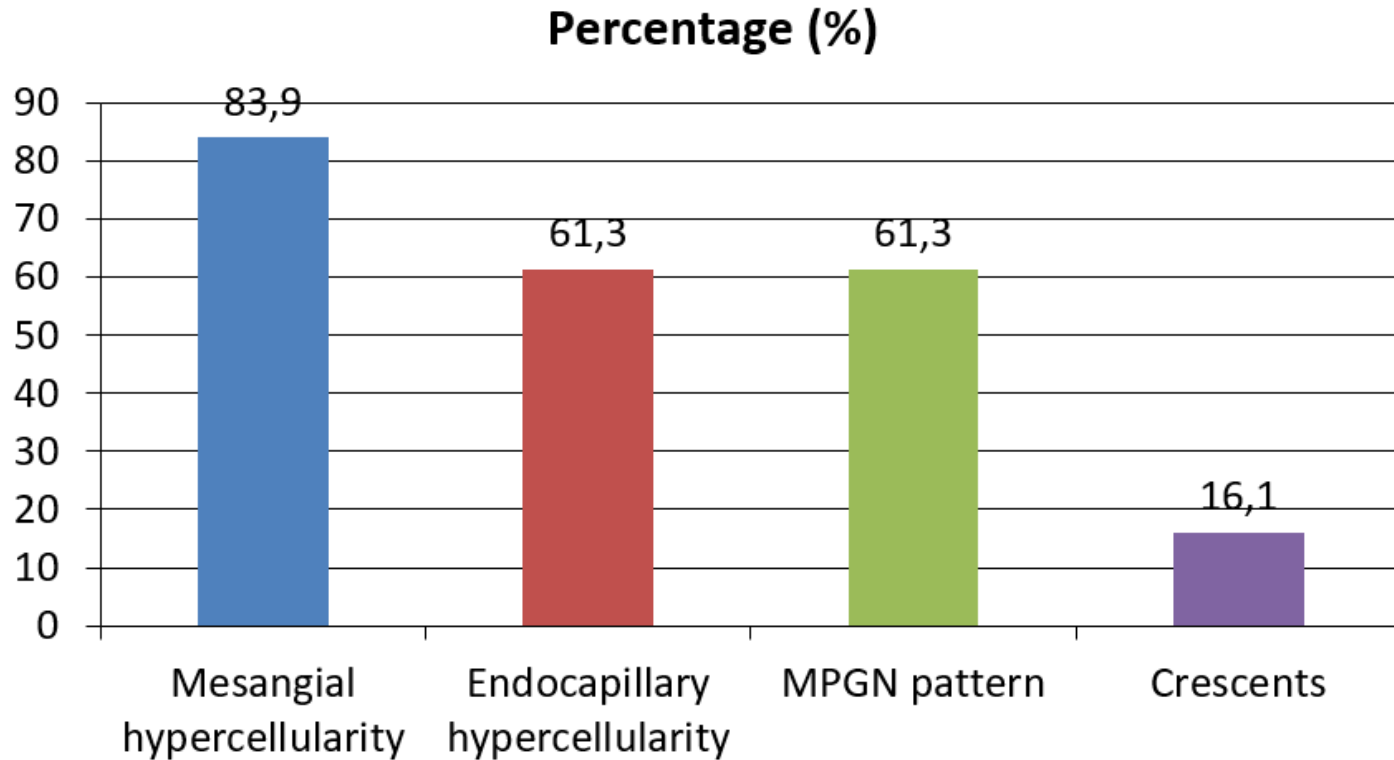
Clinical Characteristics at Kidney Biopsy (n=31)

Percentage (%)

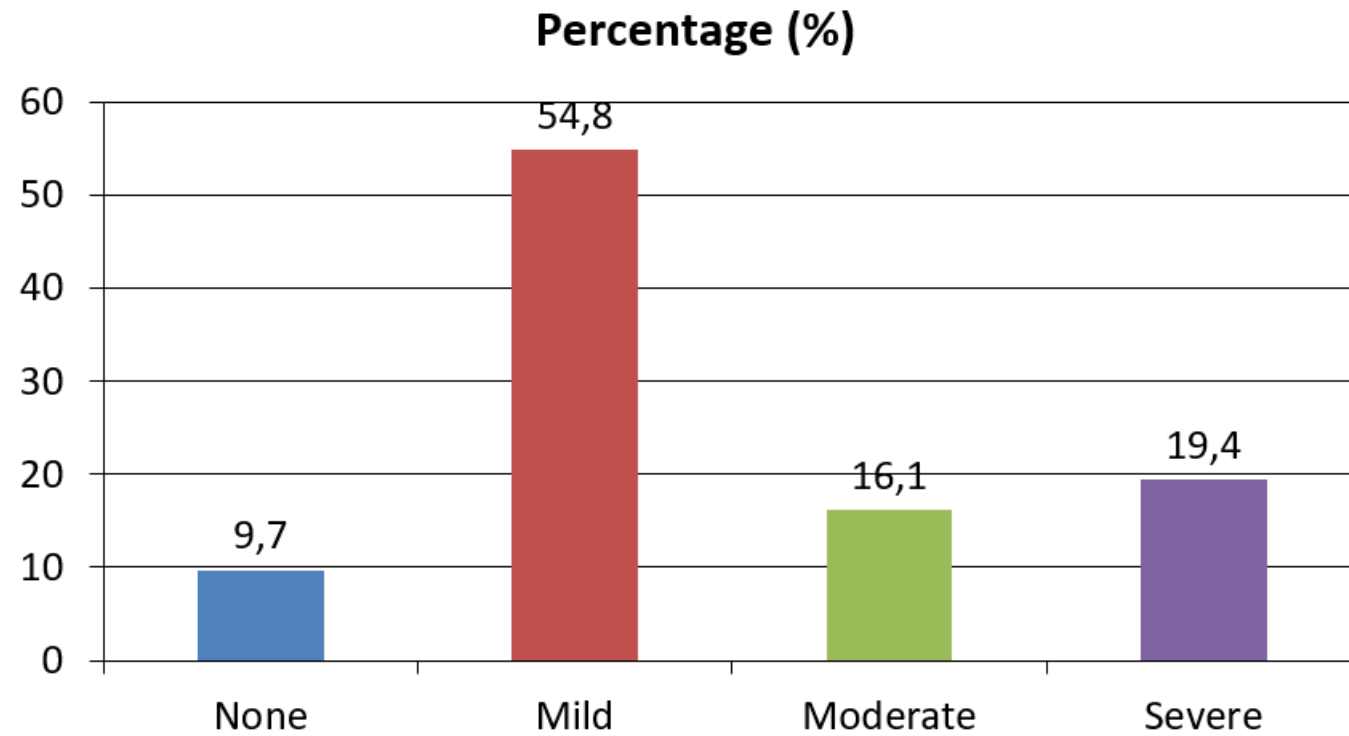


Cr~ 1,3 mg//dl
GFR~ 55 ml/min
C3=98

Histological Features (Presence %)

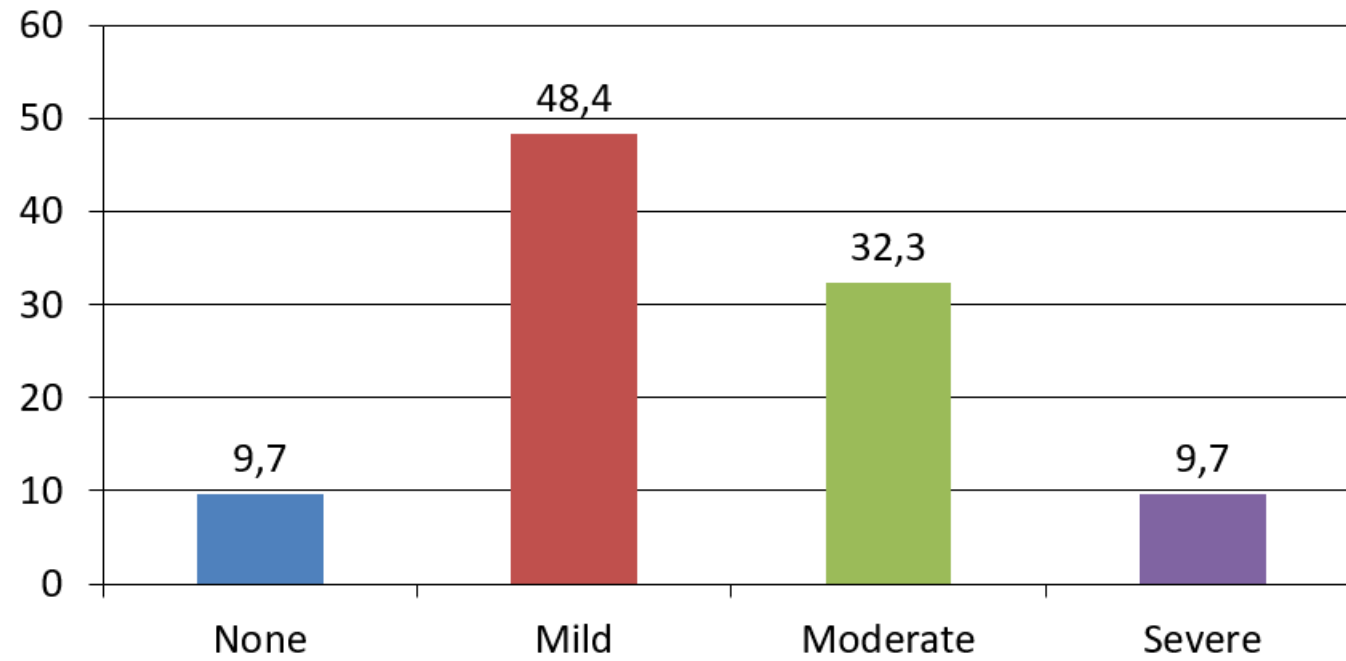


Glomerulosclerosis



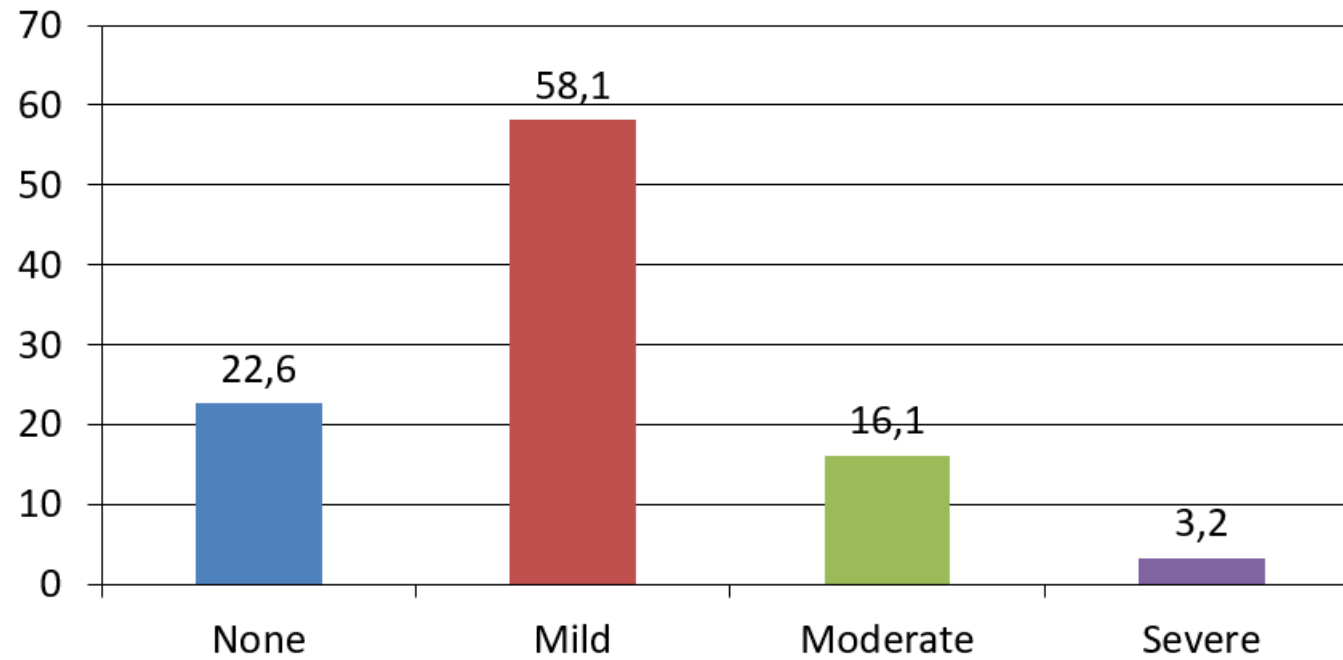
IF/TA

Percentage (%)



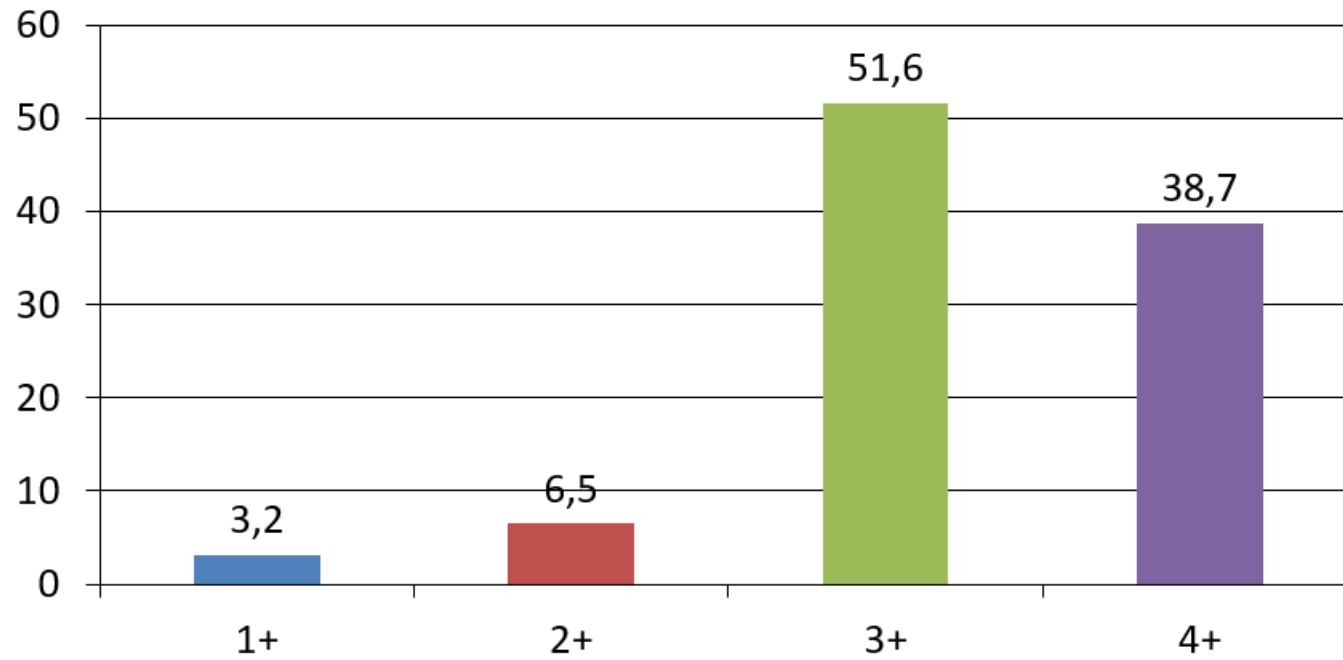
Arteriosclerosis

Percentage (%)



C3 Intensity (Updated)

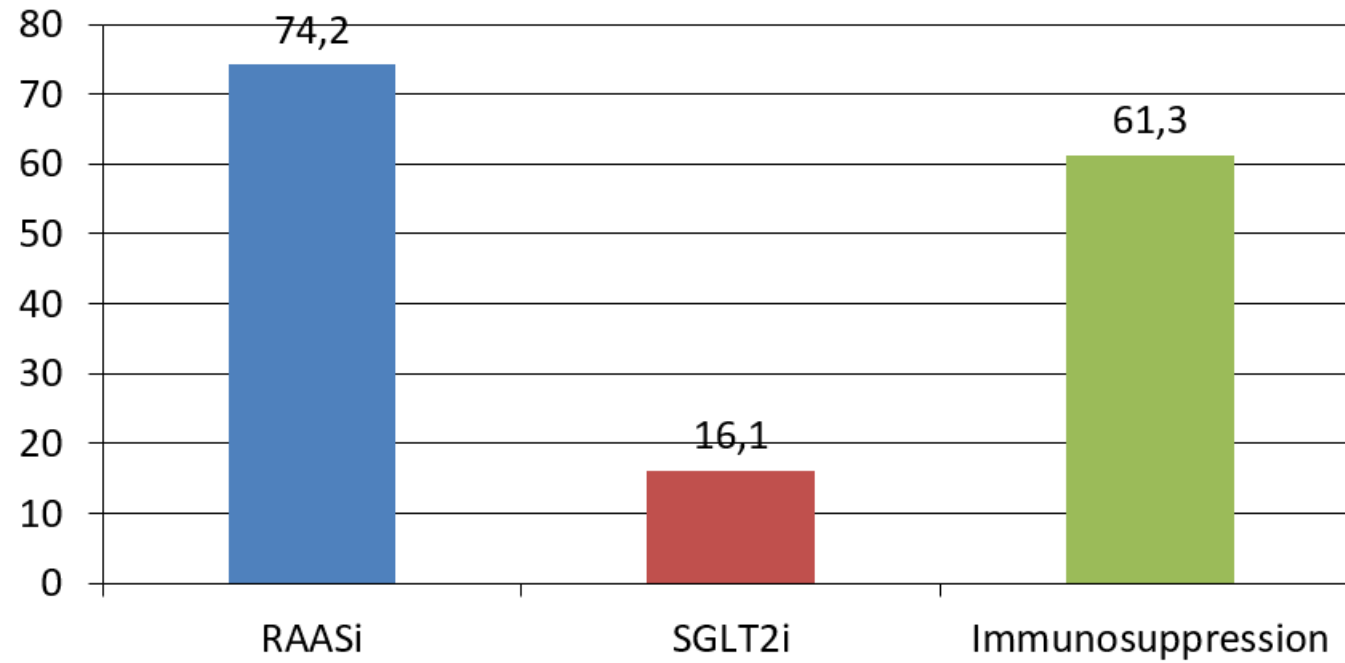
Percentage (%)



STOP

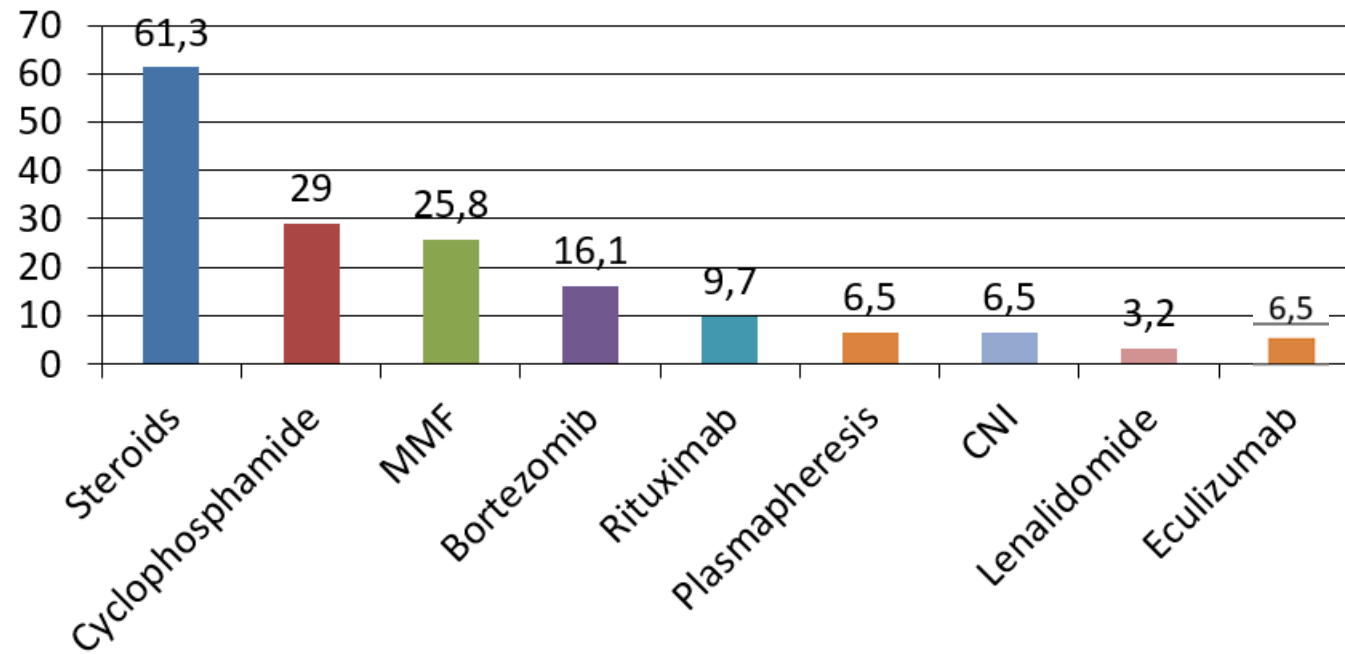
Treatment Distribution

Percentage (%)

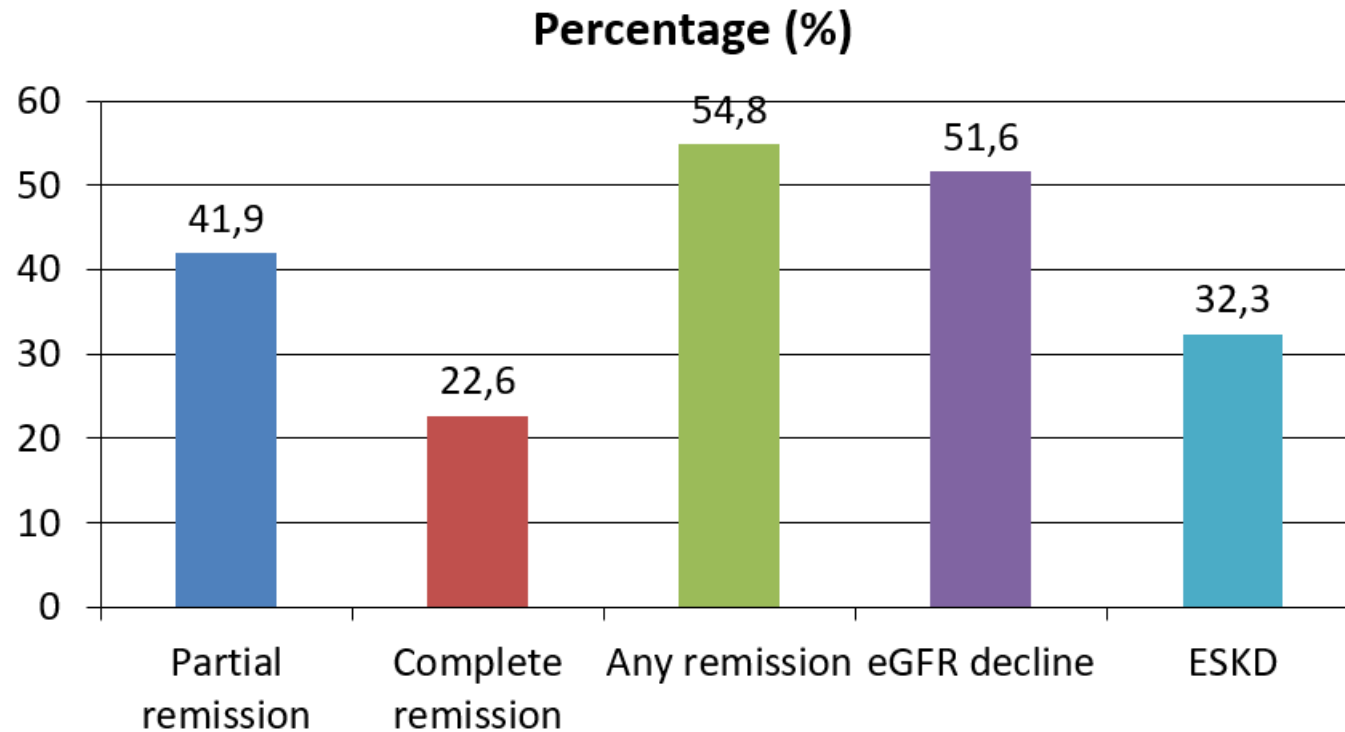


Immunosuppressive Treatments

Percentage (%)

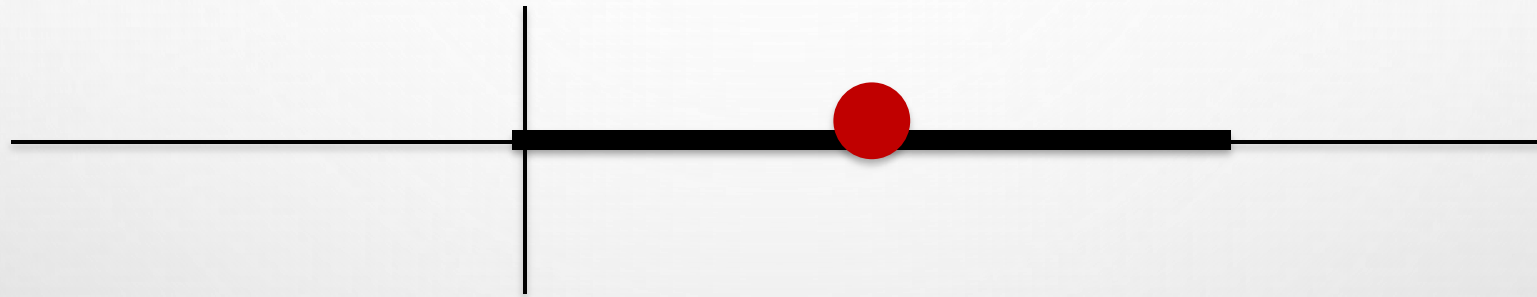


Clinical Outcomes Summary



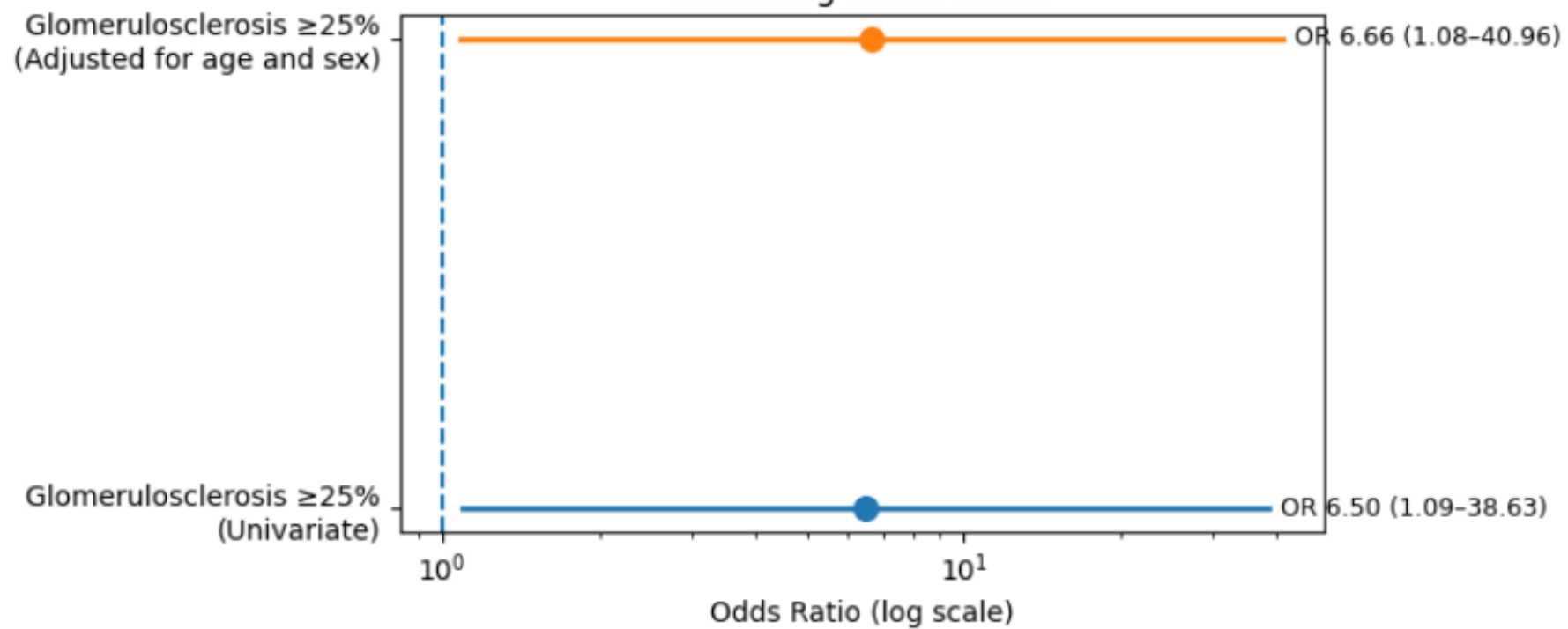
6 MTX
4 RELAPSE 66,6%

Association of Glomerulosclerosis >25% with Outcome (ESKD)



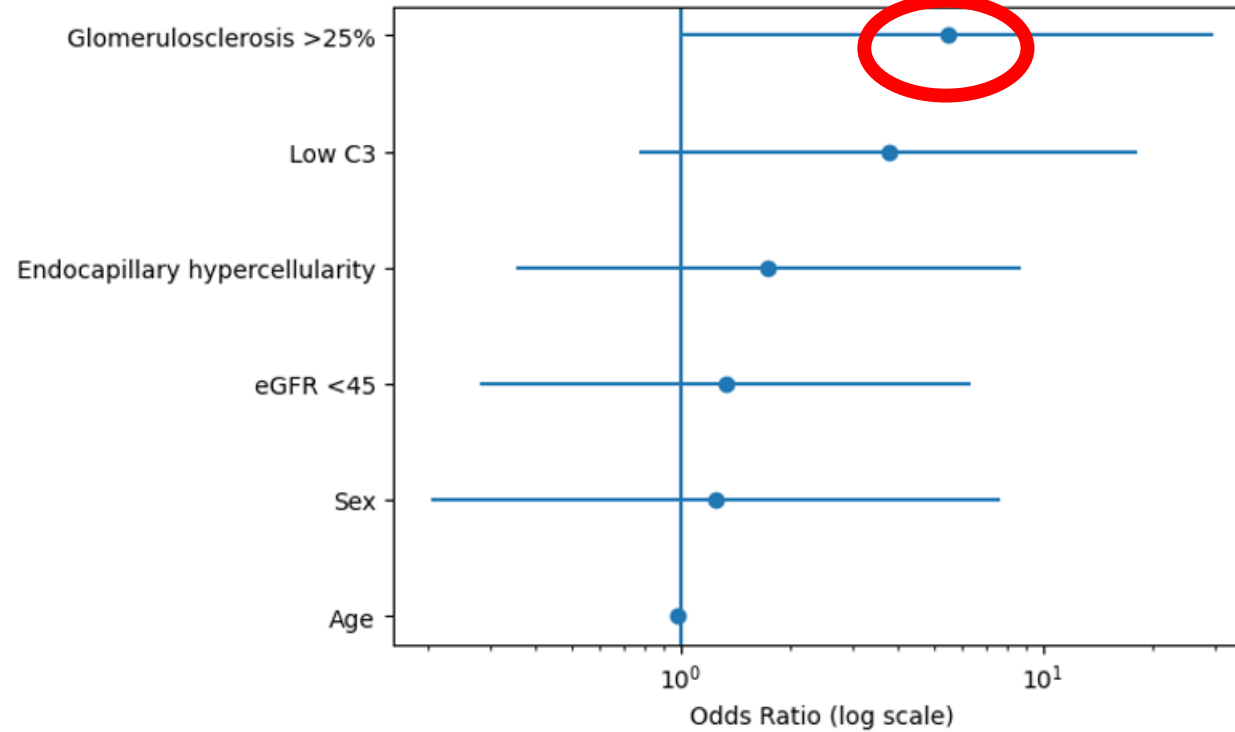
OR 4.8 (95% CI 0.95–24.14), p=0.057

Forest Plot for ESKD Risk Excluding MGRS cases



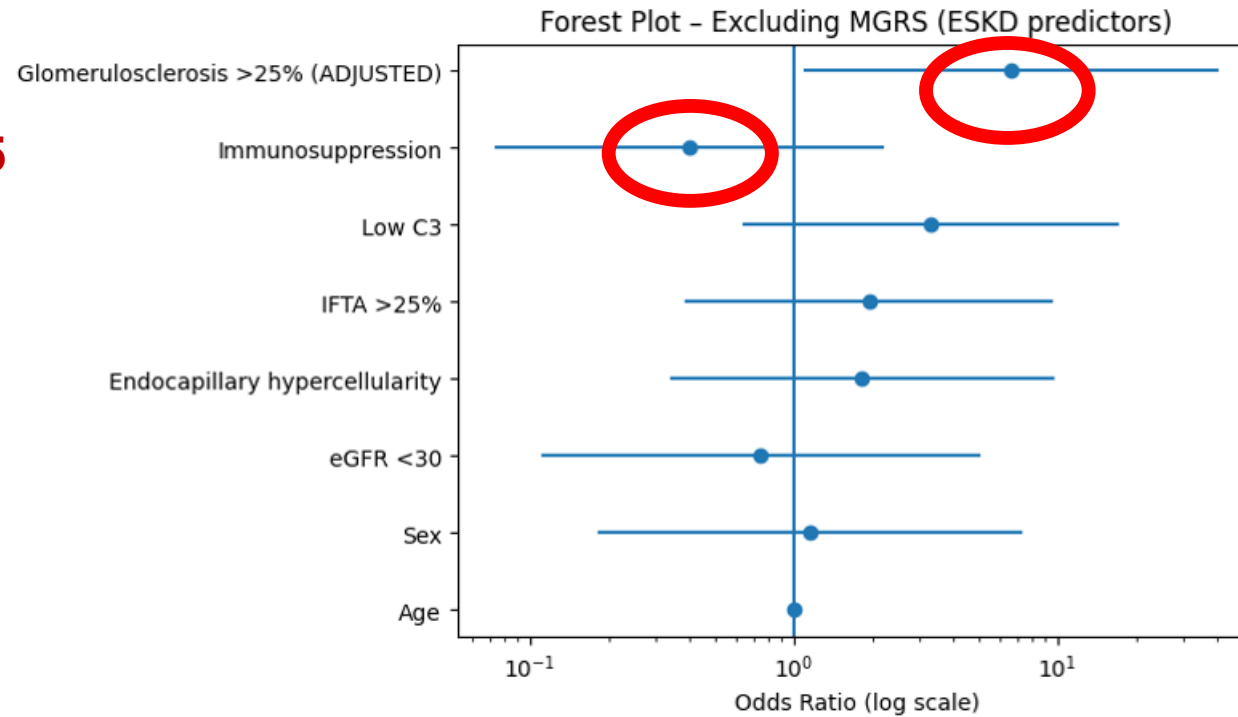
Forest Plot – ESKD Predictors (Full Model)

Extended Forest Plot - Predictors of ESKD

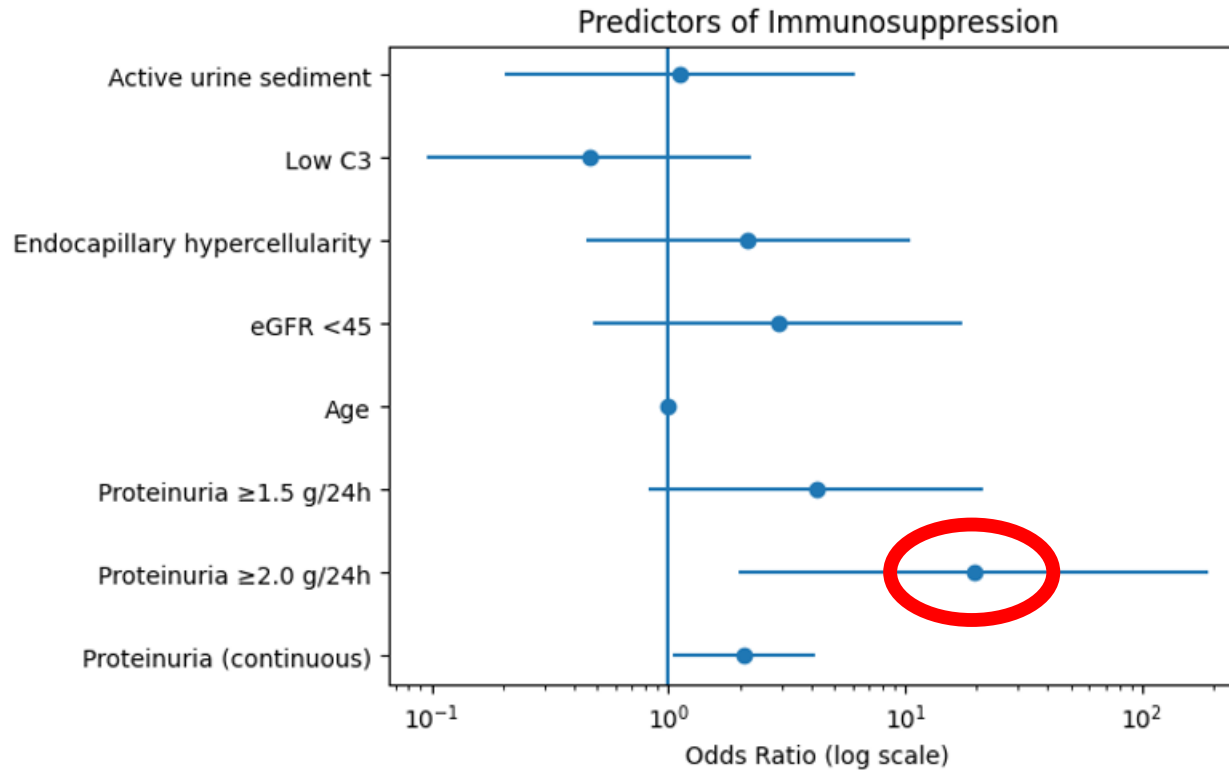


Forest Plot – Excluding MGRS

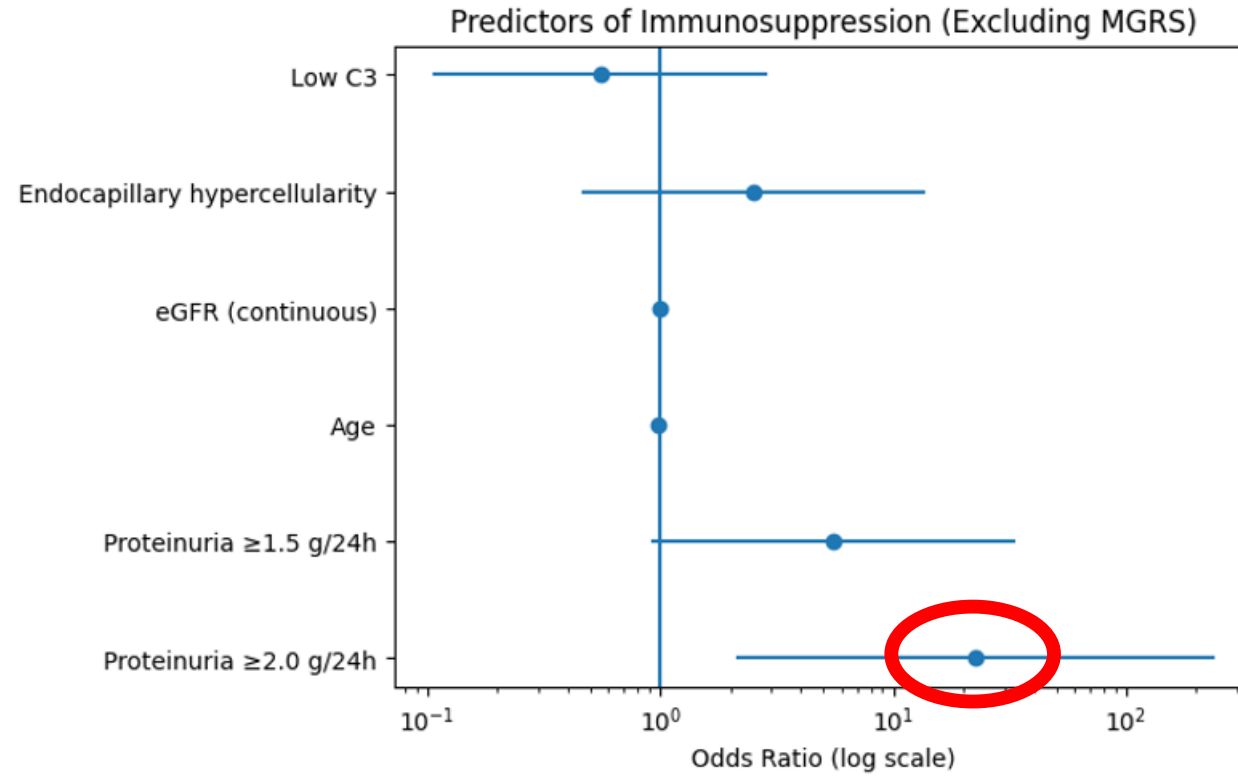
HR: 0,06, p=0,015



Forest Plot – Immunosuppression Predictors



Forest Plot – Immunosuppression (Excluding MGRS)



PREDICTORS OF ESKD (UNIVARIATE ANALYSIS)

Proteinuria ≥ 1.5 g/24h

OR: 1.44 (95% CI: 0.29 – 7.21)

p = 0.66 (Not statistically significant)

No significant association between baseline proteinuria and ESKD.



APPEAR C3G- IPTACOPAN- 76
VALLIANT- PEGCETACOPLAN- 122

Η C3 σπειραματοπάθεια σχετίζεται με πτωχή νεφρική πρόγνωση

Ο βαθμός σπειραματοσκλήρυνσης κατά την διάγνωση σχετίζεται με αυξημένο κίνδυνο εξέλιξης της νόσου

Η χορήγηση ανοσοκαταστολής σε ασθενείς με σοβαρή πρωτεϊνουρία μοιάζει να βελτιώνει την έκβαση της νόσου.



ΕΛΛΗΝΙΚΗ ΝΕΦΡΟΛΟΓΙΚΗ ΕΤΑΙΡΕΙΑ
HELLENIC SOCIETY OF NEPHROLOGY

27^ο Πανελλήνιο Συνέδριο Νεφρολογίας

Στη μνήμη του Καθηγητή Βασίλη Βαργεμέζη



20 - 23

Μαΐου 2026

Ξενοδοχείο Astir-Egnaia

WWW.27PSN.GR

Αλεξανδρούπολη

ΠΡΟΓΡΑΜΜΑ